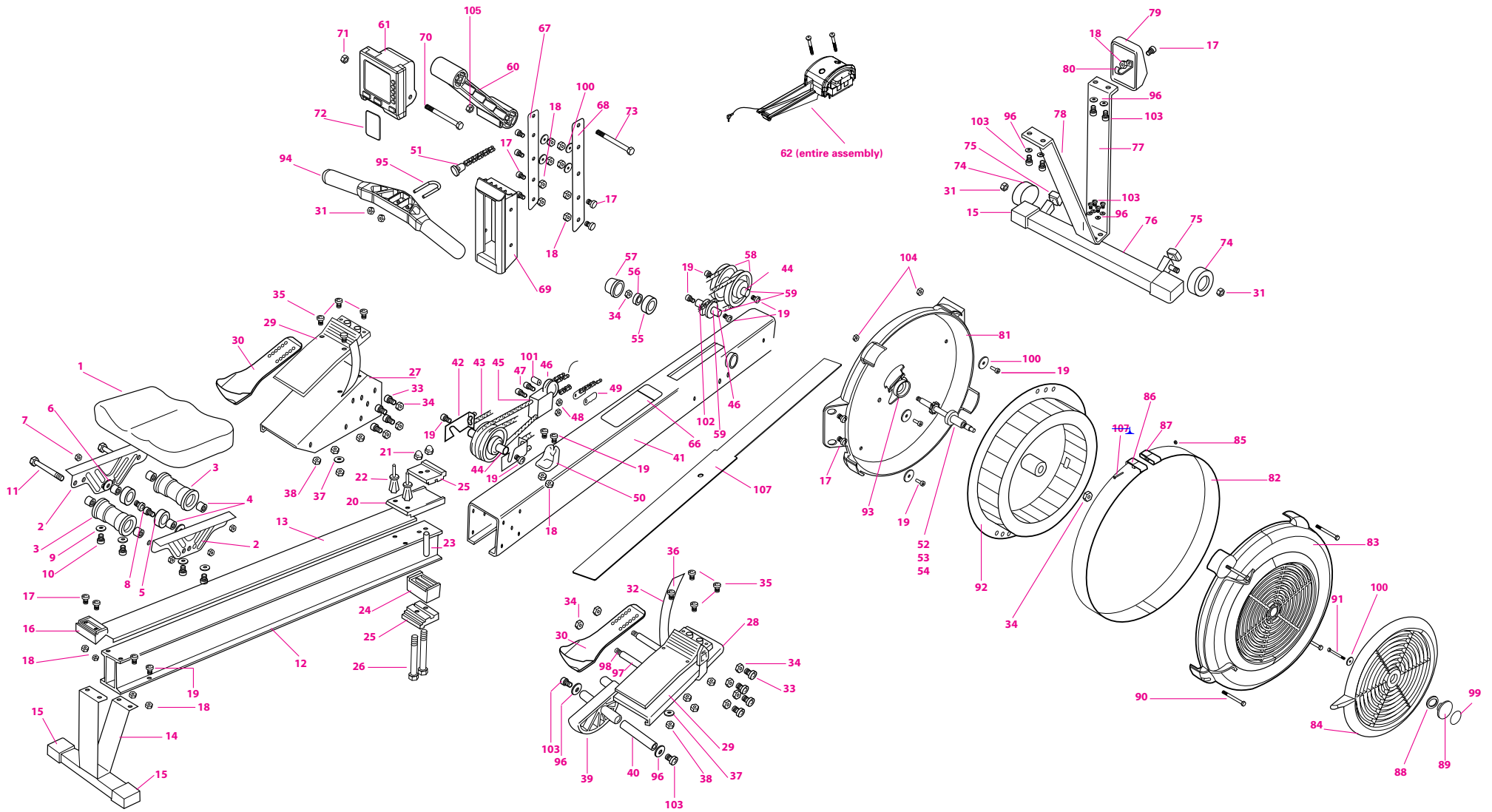


**concept 2** MODEL D SCHEMATIC  
 INDOOR ROWER

For Model D Indoor Rowers  
 made **BEFORE** July 31, 2006



|    |         |  |     |         |  |
|----|---------|--|-----|---------|--|
| 1  | PN 1929 | Seat Top w/Screws                        | 51  | PN 1716 | Chain (with Connector and Swivel C/D)  |
| 2  | PN 1923 | Seat Carriage (left and right)           | 52  | PN 1165 | Flywheel Axle                          |
| 3  | PN 1724 | Top Seat Roller x 2                      | 53  | PN 1300 | 17mm Bearing                           |
| 4  | PN 1302 | Seat Roller Spacer x 6                   | 54  | PN 1163 | Sprocket Quiet 14 Tooth D/E            |
| 5  | PN 1725 | Bottom Seat Roller x 2                   | 55  | PN 1013 | R8 Bearing Rubber Cup                  |
| 6  | PN 125  | Seat Roller Washer x 2                   | 56  | PN 232  | R8 Bearing                             |
| 7  | PN 1209 | Seat Roller Nut x 4                      | 57  | PN 1010 | Bearing Cover                          |
| 8  | PN 1208 | Bottom Seat Roller Bolt x 2              | 58  | PN 1011 | Shock Cord Pulley x 4                  |
| 9  | PN 1246 | Seat Top Lock Washer x 4                 | 59  | PN 1130 | Axle Shock Cord/Chain Idler Pulley x 3 |
| 10 | PN 1207 | Seat Top Screw x 4                       | 60  | PN 1025 | Monitor Arm                            |
| 11 | PN 1211 | Top Seat Roller Bolt x 2                 | 61  | PN 1874 | PM3 Monitor                            |
| 12 | PN 1907 | Monorail Assy. D w/Track                 | 62  | PN 1887 | Generator Assembly                     |
| 13 | PN 1762 | Track/Tape Assembly w/Rivet              | 66  | PN 1533 | Technique Label                        |
| 14 | PN 1175 | Rear Leg                                 | 67  | PN 1169 | Chain Guide Bracket Left               |
| 15 | PN 119  | Rubber Foot x 4                          | 68  | PN 1168 | Chain Guide Bracket Right              |
| 16 | PN 1008 | Rear Bumper                              | 69  | PN 1003 | Chain Guide                            |
| 17 | PN 1201 | 3/4" Button Head Screw Patched           | 70  | PN 1268 | Monitor Arm Bolt 3.5" long             |
| 18 | PN 1213 | 1/4" Nut                                 | 71  | PN 1271 | 3/8" Nut                               |
| 19 | PN 1231 | 1/2" Button Head Screw Patched           | 72  | PN 1810 | Log Card w/Sleeve Assembly             |
| 20 | PN 1006 | Top Front Bumper                         | 73  | PN 1224 | Monitor Arm Bolt 4" long               |
| 21 | PN 1217 | Acorn Nut x 2                            | 74  | PN 1308 | Castor Wheels                          |
| 22 | PN 1251 | Poly Rivet x 2                           | 75  | PN 1309 | Castor Stop                            |
| 23 | PN 1103 | Monorail Bolt Tube                       | 76  | PN 1925 | Front Foot w/Casters                   |
| 24 | PN 1007 | Bottom Front Bumper                      | 77  | PN 1173 | Front Leg Long                         |
| 25 | PN 1102 | Monorail Hanger x 2                      | 78  | PN 1172 | Front Leg Short                        |
| 26 | PN 1204 | Monorail Hanger Bolt x 2                 | 79  | PN 1009 | End Cap                                |
| 27 | PN 1170 | Left Foot Bracket                        | 80  | PN 1131 | End Cap Hook                           |
| 28 | PN 1171 | Right Foot Bracket                       | 81  | PN 1031 | Flywheel Cover Back                    |
| 29 | PN 1720 | Flex foot / Stretcher Cover W/ Screws    | 82  | PN 1912 | Outlet Perf w/connectors               |
| 30 | PN 1017 | Flex foot x 2                            | 83  | PN 1942 | Flywheel Cover Front Assembly          |
| 31 | PN 1235 | 1/4" Nylock Nut x 4                      | 84  | PN 1033 | Damper                                 |
| 32 | PN 1501 | Foot Strap x 2                           | 85  | PN 1274 | 1275 Outlet Perf Connector Screw & Nut |
| 33 | PN 1210 | Foot Bracket Screws - Allen Key Head x 8 | 86  | PN 1035 | Perf Connector Screw Side              |
| 34 | PN 1244 | 3/8" Nylock Nut x 13                     | 87  | PN 1036 | Perf Connector Nut Side                |
| 35 | PN 1227 | Short Toe Piece Screw x 6                | 88  | PN 1278 | Wave Washer                            |
| 36 | PN 1228 | Long Toe Piece Screw x 2                 | 89  | PN 1034 | Hub Cap                                |
| 37 | PN 1229 | Toe Piece Washer x 2                     | 90  | PN 1276 | Flywheel Cover Bolt x 4                |
| 38 | PN 1212 | Nylock Nut Toe Piece x 8                 | 91  | PN 1273 | Damper Screw                           |
| 39 | PN 1792 | Frame Lock                               | 92  | PN 1940 | Flywheel Assembly w/Magnet             |
| 40 | PN 1144 | Frame Lock Axle                          | 93  | PN 1012 | 17mm Bearing Rubber Cup                |
| 41 | PN 1178 | Box Frame                                | 94  | PN 1040 | Handle W/ Grips                        |
| 42 | PN 1104 | S.C.A.M. x 2                             | 95  | PN 244  | Handle U Bolt                          |
| 43 | PN 1731 | Shock Cord                               | 96  | PN 1205 | Lock Washer x 10                       |
| 44 | PN 1310 | Shock Cord Pulley Axle Spacer x 4        | 97  | PN 1105 | Hanger Bolt Tube x 2                   |
| 45 | PN 1756 | Traveling Pulley Assembly C/D/E          | 98  | PN 1203 | Hanger Bolt x 2                        |
| 46 | PN 1024 | Chain Idler Pulley x 2                   | 99  | PN 1534 | Hub Cap Label                          |
| 47 | PN 1206 | Traveling Pulley Screws x 2              | 100 | PN 1232 | Fender Washer x 8                      |
| 48 | PN 1249 | 1/4" Nylock Jam nut x 2                  | 101 | PN 1303 | Traveling Pulley Spacer                |
| 49 | PN 285  | Chain Connector x 2                      | 102 | PN 1305 | Idler Pulley Spacer x 2                |
| 50 | PN 1754 | Handle Hook                              | 103 | PN 1248 | 3/4" Button Head Screw                 |
|    |         |  | 104 | PN 327  | Nut #10 SS (4)                         |
|    |         |  | 105 | PN 1270 | Nut Nylock Zinc 3/8 - 16 ZP            |
|    |         |  | 106 | PN 1274 | Pan PH #6 x 2 SS                       |
|    |         |  | 107 | PN 1626 | Return Mechanism Cover                 |